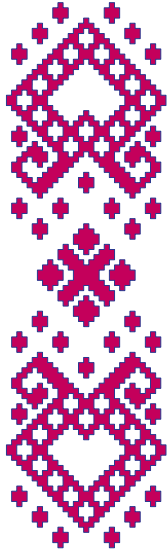


Be my Valentine

© Claudia Wollny 2018 • published: TWIST Spring 2018 (www.tabletweavers.org)

For personal use only, no commercial use! When posting a photo of your woven band, it would be nice, if you mention my name and my website as the source: www.brettchenweben.com



Weaving Pattern

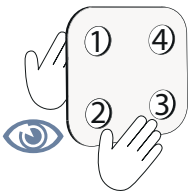
- turn backward
- turn forward
- Center tablet
- Transition

Set-up

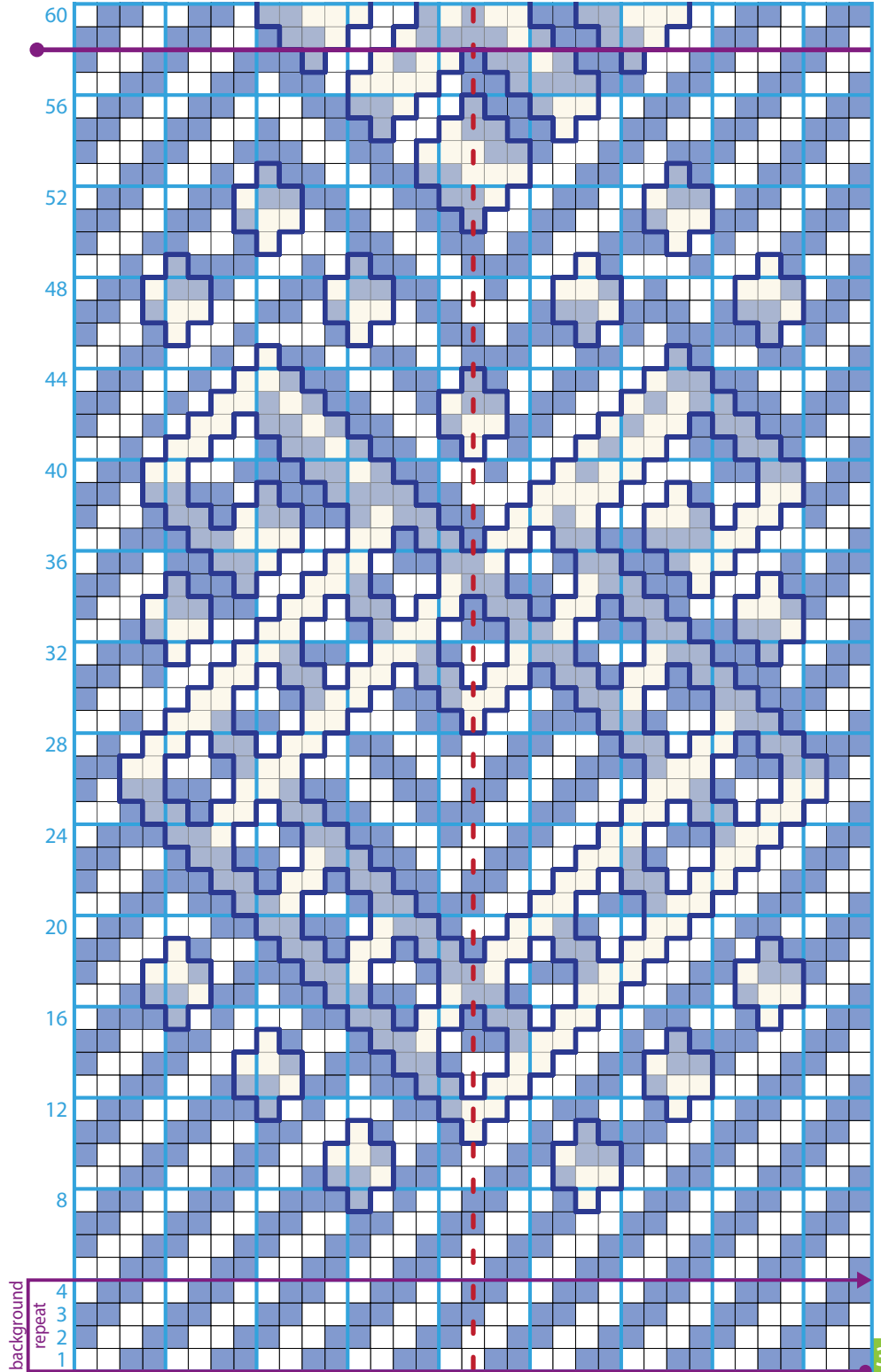
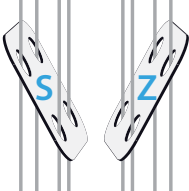
- Design color
- Background color
- Z tablet slant

①–④ Hole positions

Hole Positions

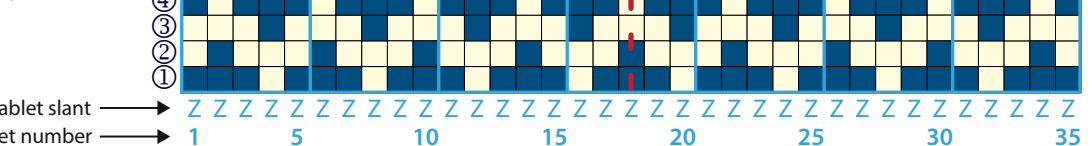


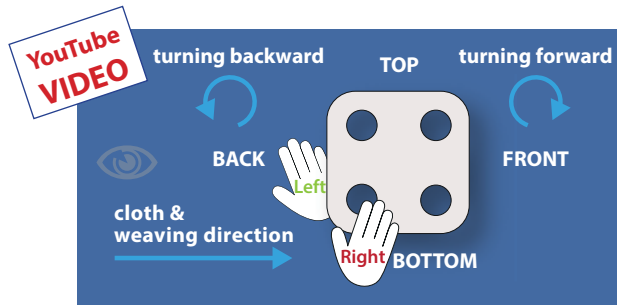
Tablet Slant



© Claudia Wollny 2018 • www.brettchenweben.com

Set-up





Tablet Weaving Basics | Brettchenweben Grundlagen



Video

Be my Valentine



www.brettchenweben.com

